



4 ×



BESC. 852

4 ×



BESC. 851

10 ×



SCHR. 415  
5 × 50 mm

4 ×



SCHR. 349  
M6 × 30 mm

1 ×



SCHR. 338

8 ×



BESC. 172

6 ×



BESC. 911

2 ×



SCHR. 300

2 ×



BESC. 422

4 ×



BESC. 625

2 ×



BESC. 624

2 ×



BESC. 173

1 ×



Z6.B/171-FF

6 ×



BESC. 164

2 ×



SCHR. 350  
6,3 × 13mm

10 ×



BESC. 492  
3 mm

2 ×



BESC. 423  
8 mm

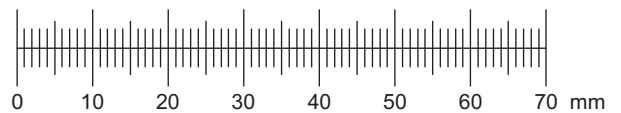
1 ×



BESC. 488



M: 1:1



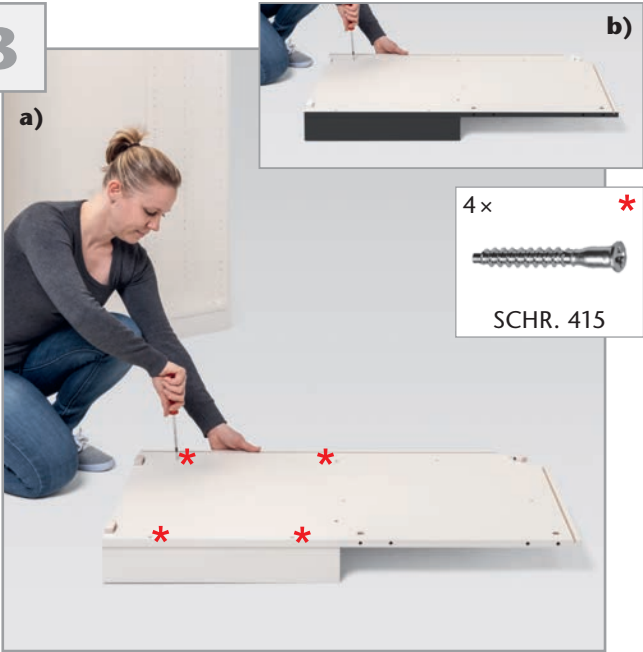
1



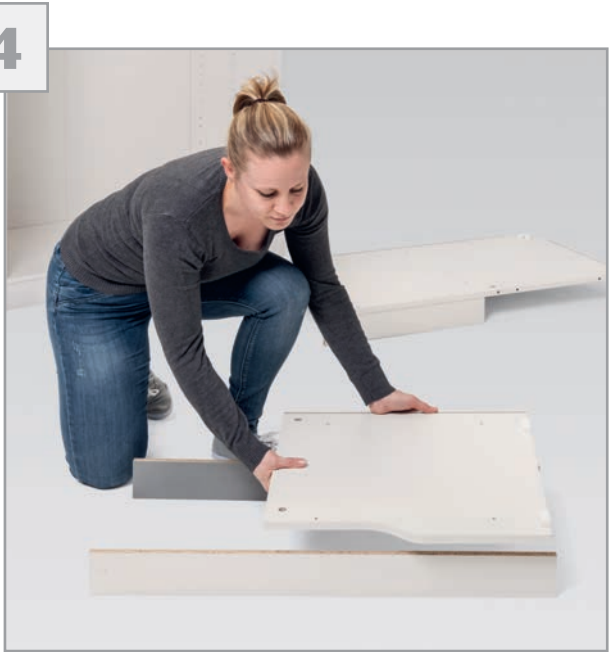
2



3



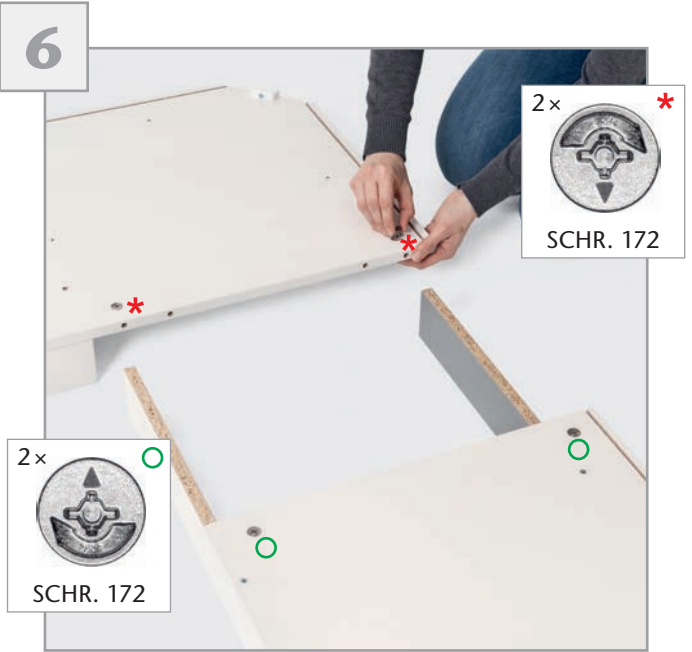
4



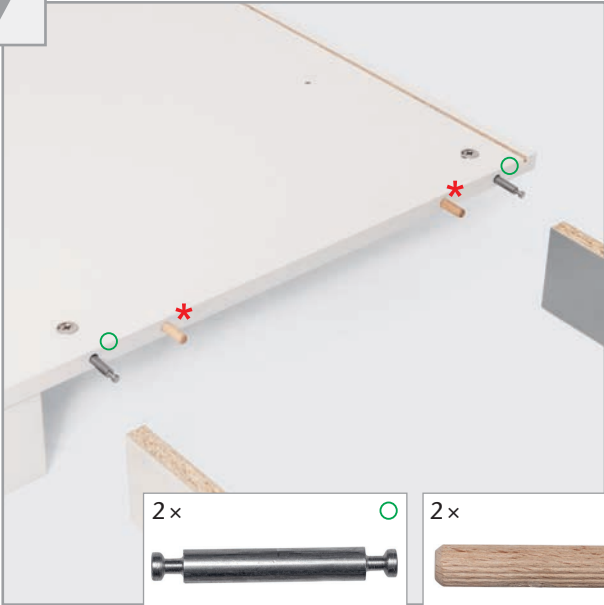
5



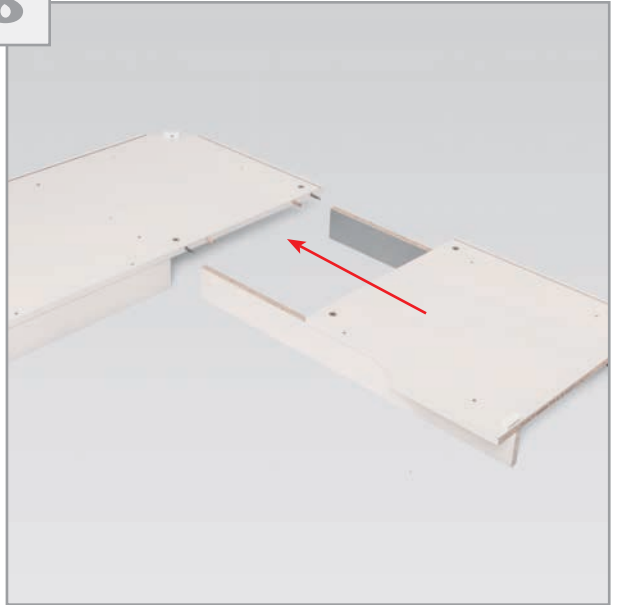
6



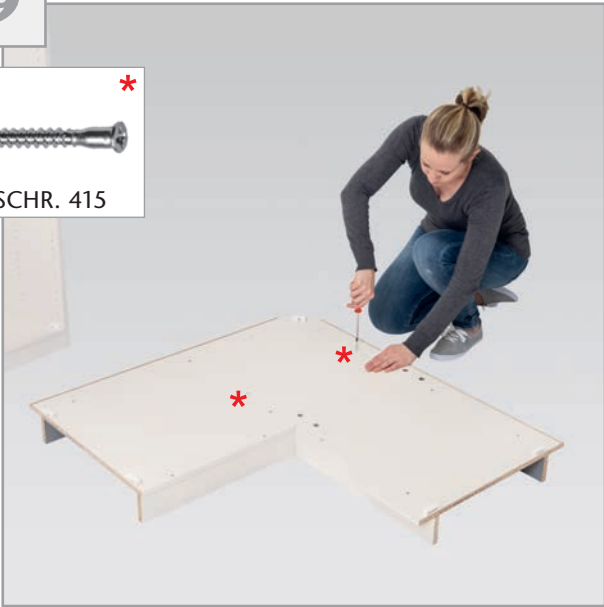
7



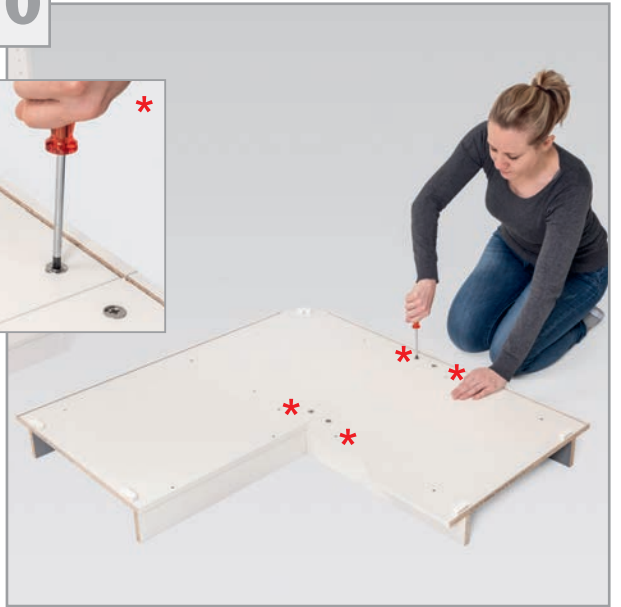
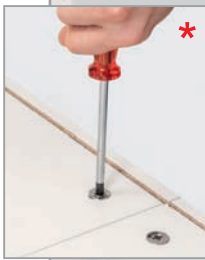
8



9



10



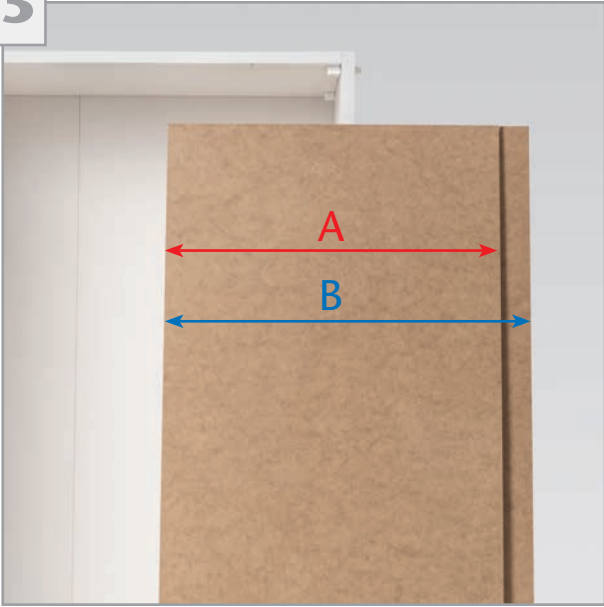
11



12



13



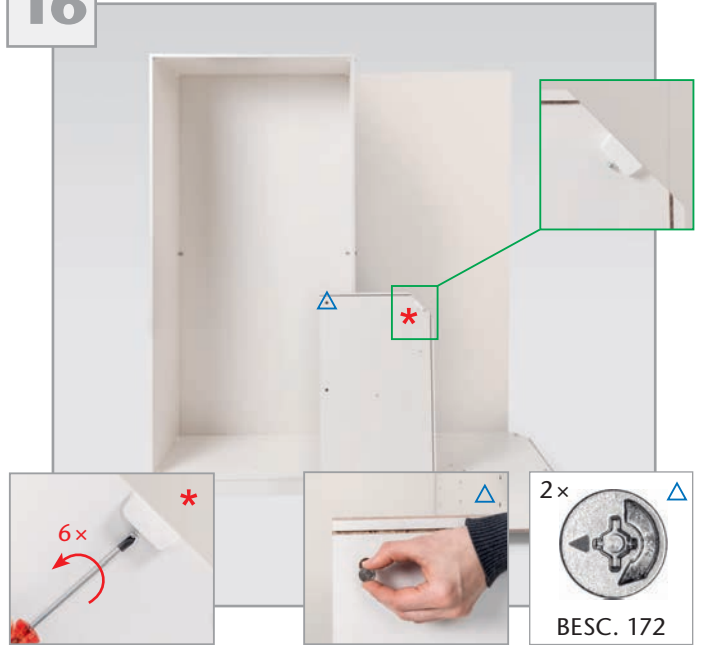
14



15



16



17



18





19



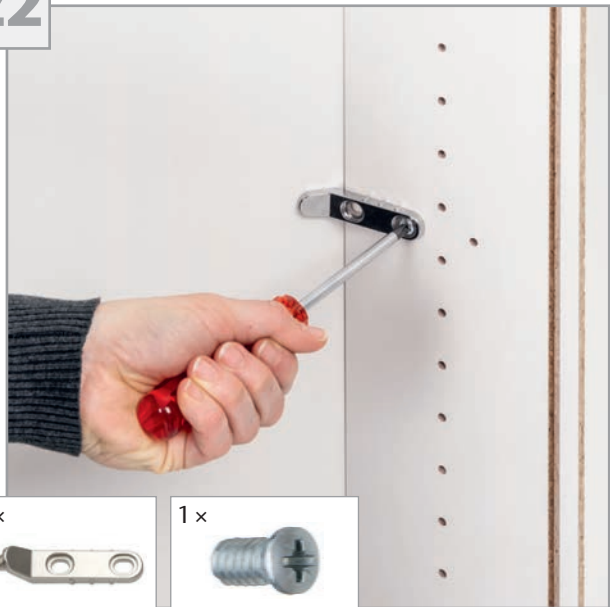
20



21



22



23



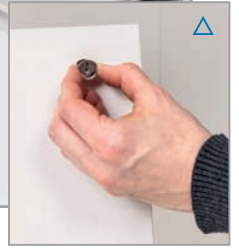
24



25



26



27



28



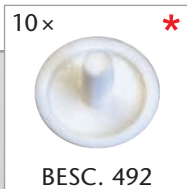
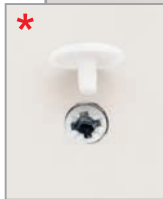
29



31



32



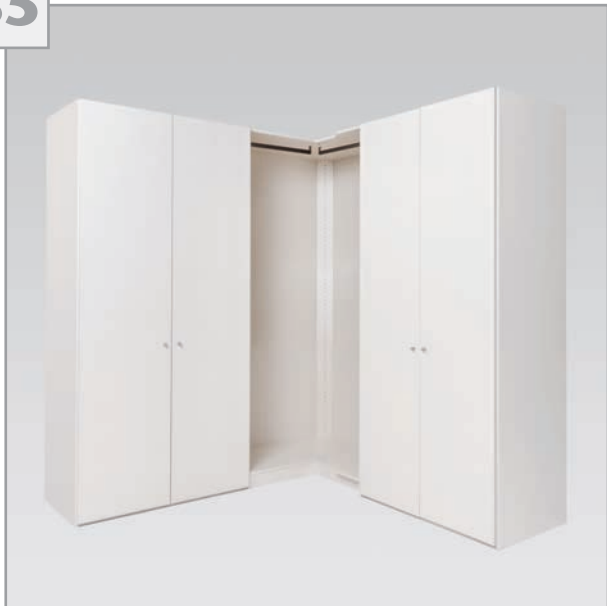
33



34

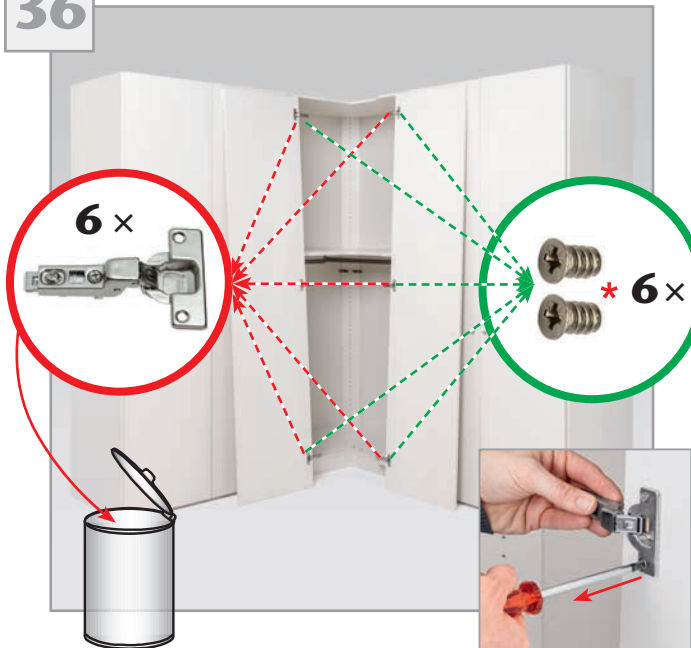


35

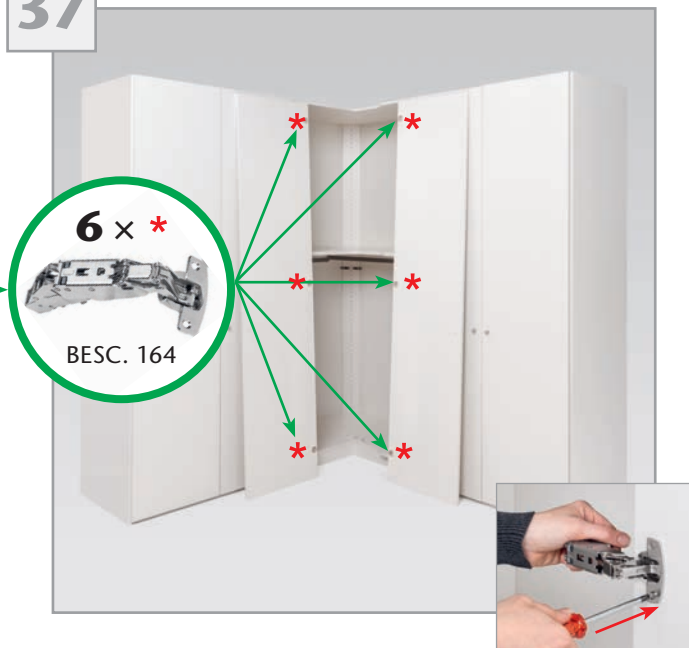




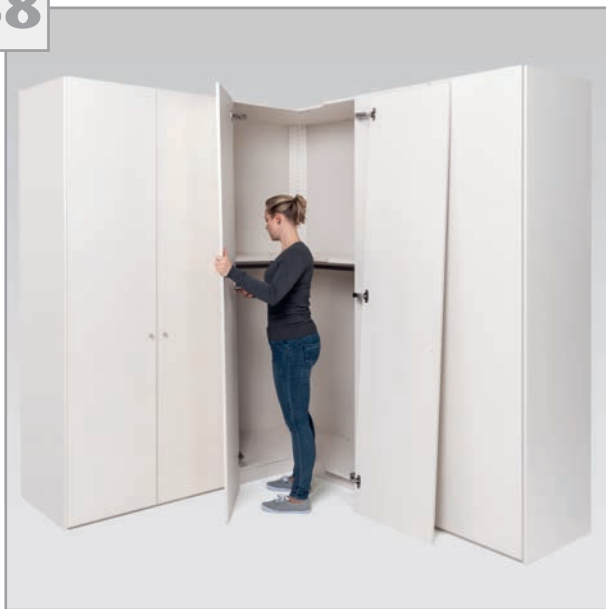
36



37



38



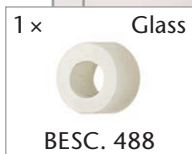
39

a)

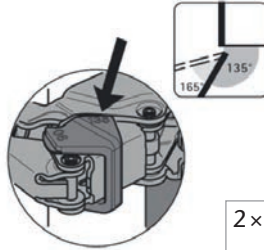
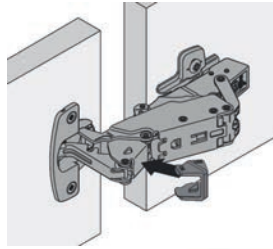
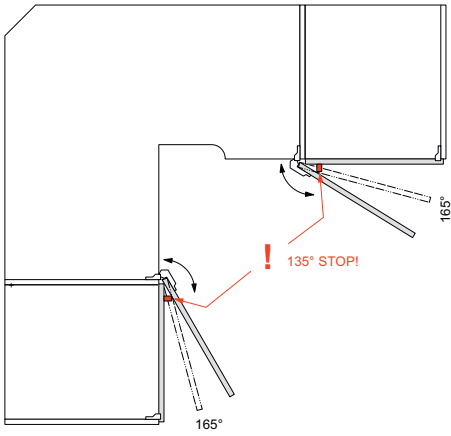


39

b)



40



41

